

Subject:

PAC-KING RAM ASSEMBLY

Bulletin No: 01-00132/12

Issued: March 19/2012

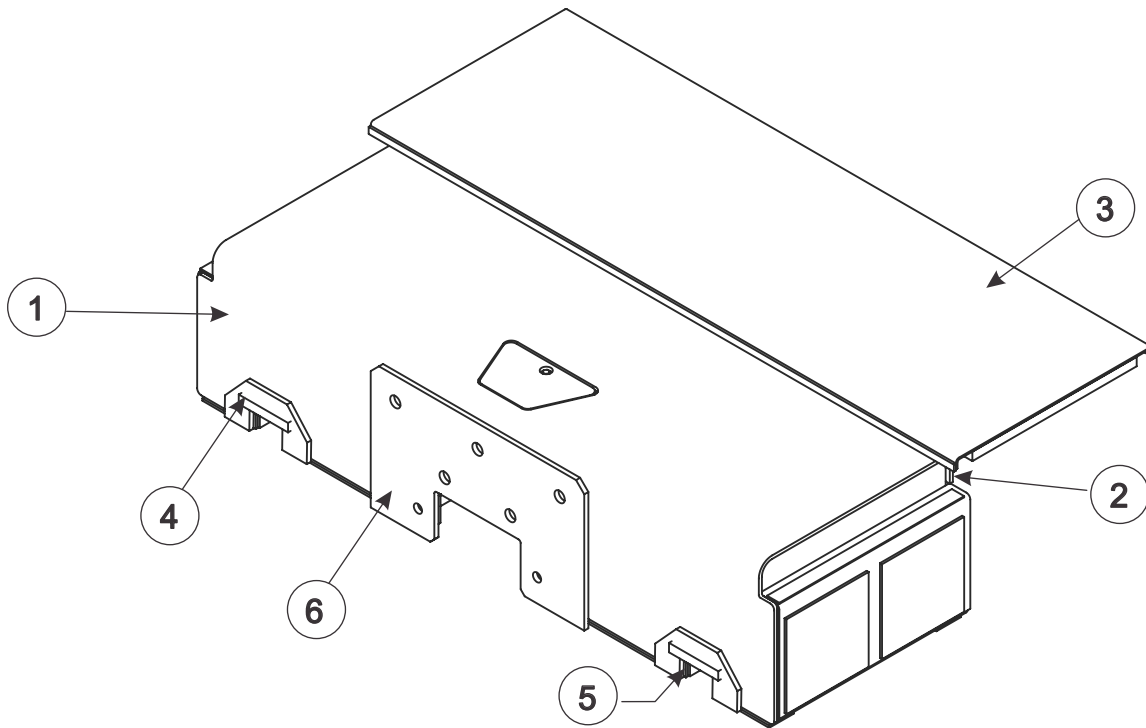
APPLICABLE MODEL(S)

All models PKI - PKII - PKIII - PK-FLEX

DESCRIPTION

During one of our recent customer feedback programs, we found some customers that felt our ram assembly was not as robust as our Pac-King bodies. Based on this feedback we did a complete redesign of our ram assembly and after months of testing, we are now satisfied that the life cycle of our Ram will surpass that of our competition.

Attached you will see the improvements we have made to over 90% of the ram assembly components and an increase of over 400% in overall product strength.



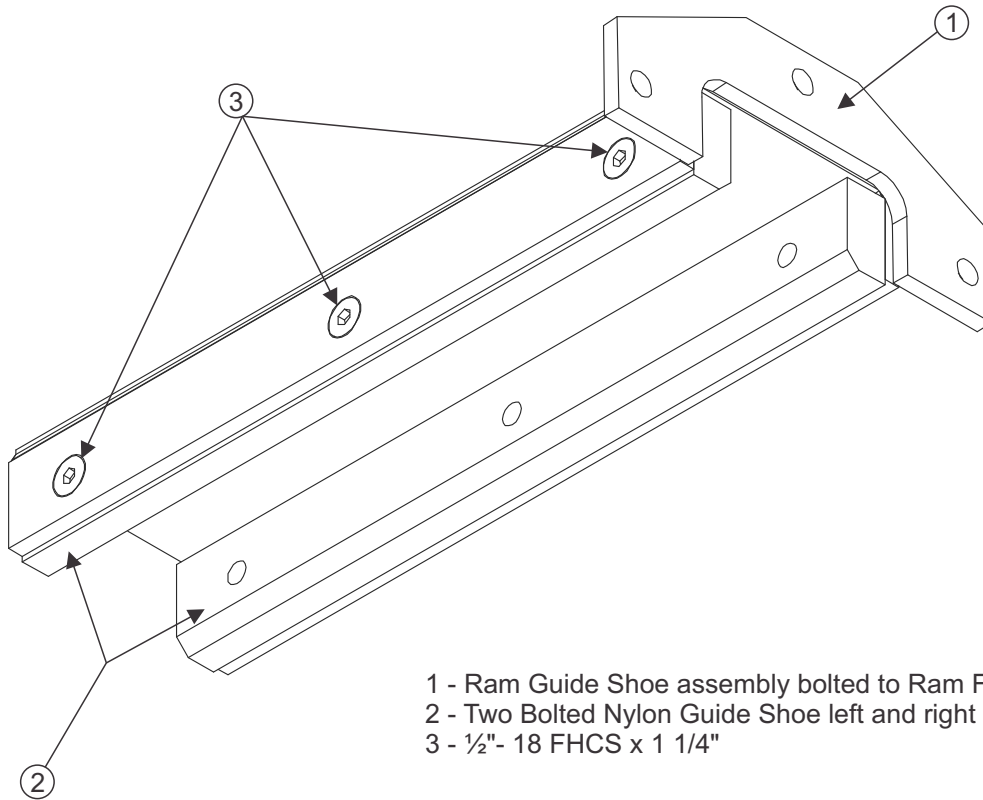
- 1 - Ram Face was 1/4" Ht100 now 3/8 Ar400
- 2 - Ram pin grease fittings were located in the center of the ram under the top access inspection cover, now they have been relocated to back of ram using remote grease fittings.
- 3 - Follower plate has a new underside support structure built from Ht100 to prevent sagging.
- 4 - Guide shoe face was 3/8" bolted to ram, it's now 1/2" and stitch welded to the ram. It's also stitch welded at rear.
- 5 - Guide shoes were made with nylon and the ram traveled on the floor of the hopper. Shoes are now made from Abrasive Resistant Ar500 and the ram now travels on Ar500 plates on the floor rails. This creates a neutral wear on the guide shoes and prevents wear to the hopper floor.
- 6 - Ram face inside the hopper area is now equipped with a 1/2" center reinforcement plate in front of where our packer cylinders apply packing pressure.

Legacy - GUIDE SHOE ASSEMBLY

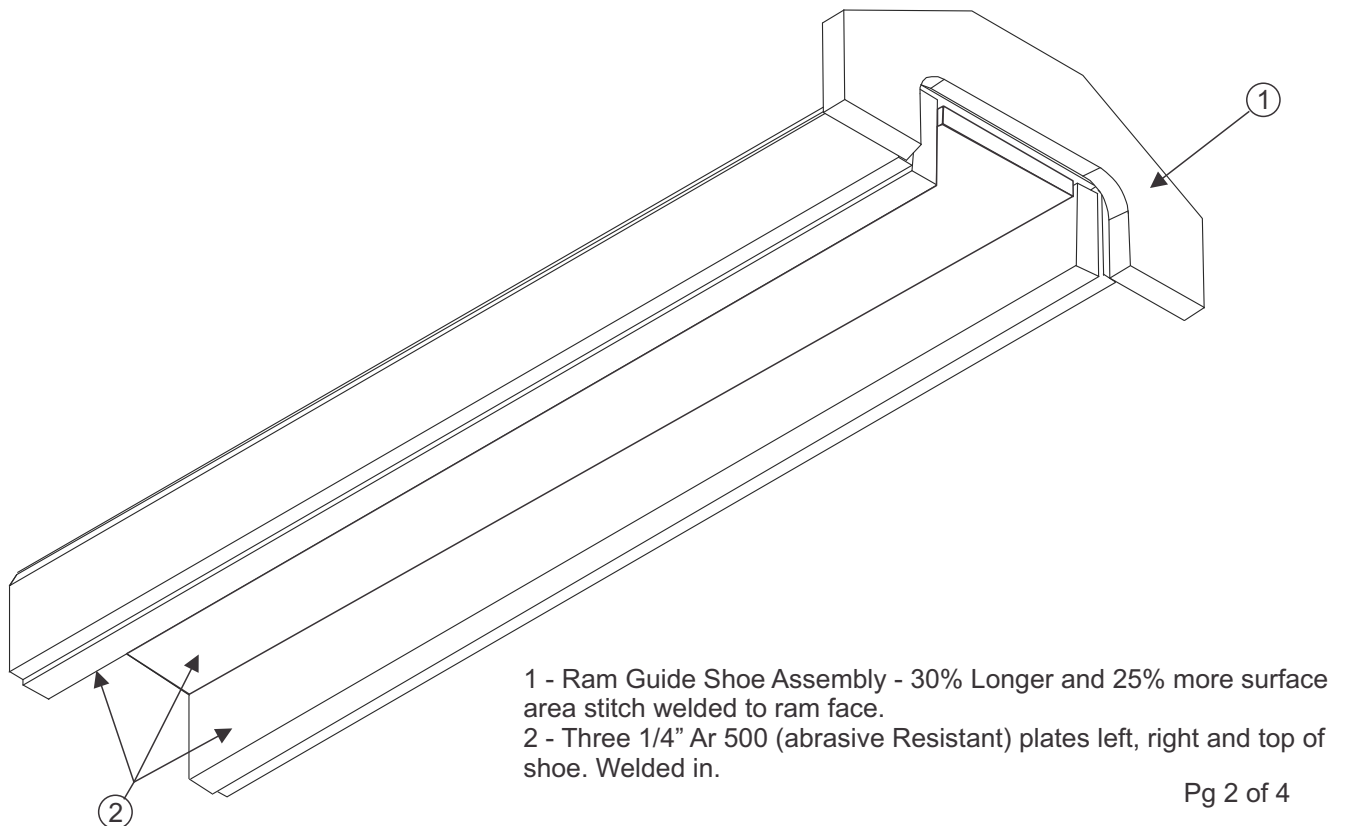
Bulletin No: 01-00132/12

Issued: March 19/2012

© 2012 Shu-Pak Equipment Inc.



Current - GUIDE SHOE ASSEMBLY

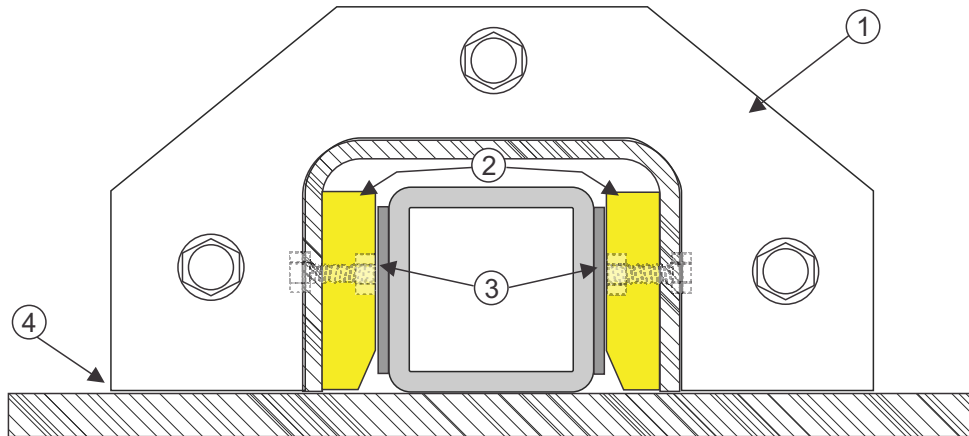


Legacy - GUIDE SHOE ASSEMBLY And Floor Guide Rail

Bulletin No: 01-00132/12

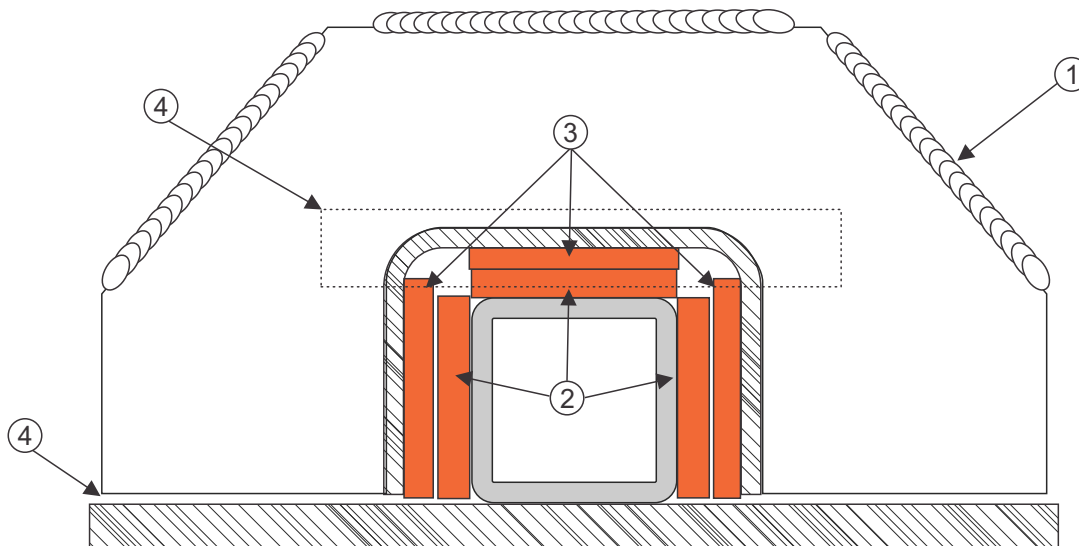
Issued: March 19/2012

© 2012 Shu-Pak Equipment Inc.



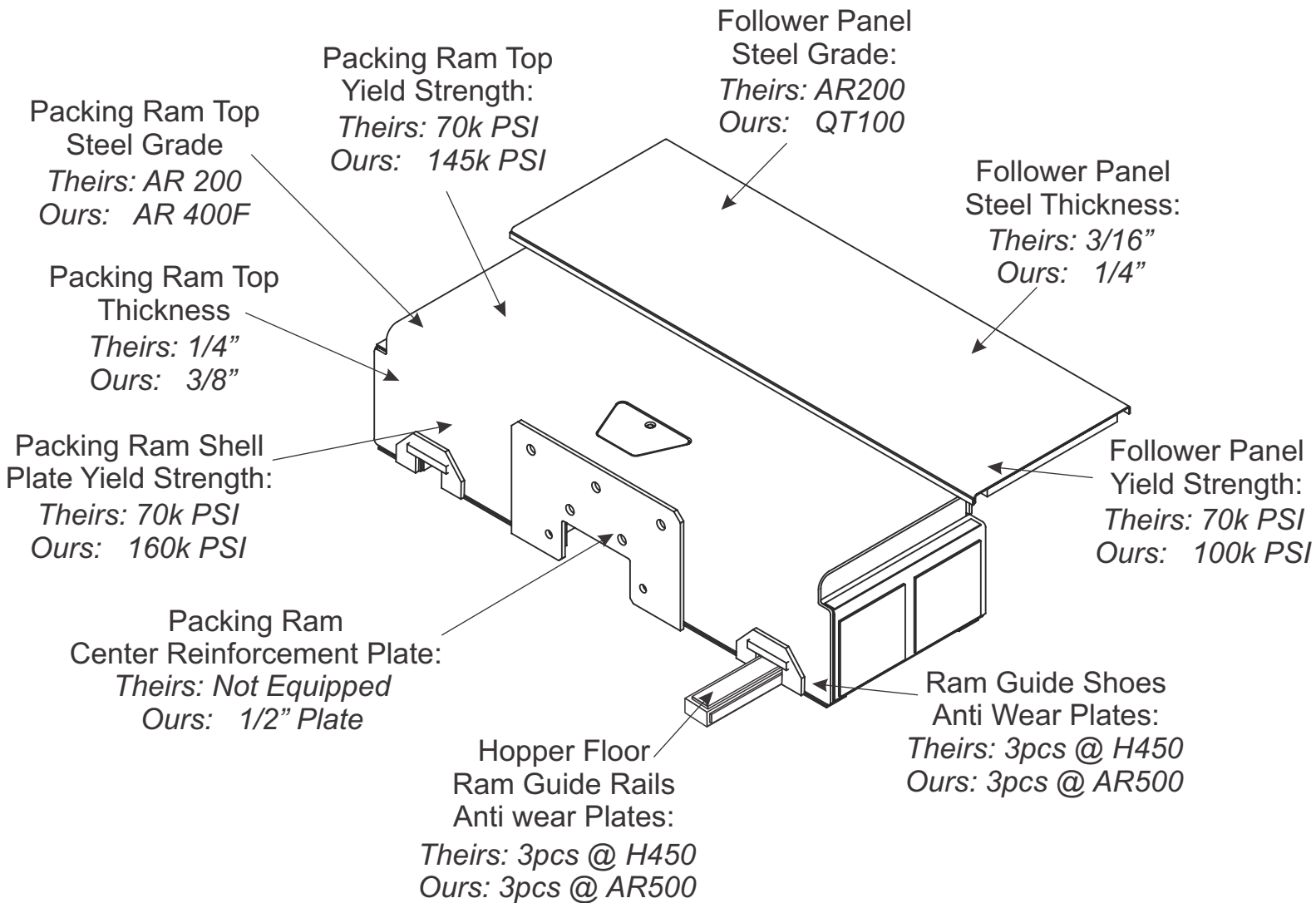
- 1 - Ram Guide Shoe assembly bolted to Ram Face
- 2 - Two Bolted Nylon Guide Shoe left and right of shoe
- 3 - Mild steel wear plates
- 4 - Guide shoe assembly traveled on hopper floor and over time could wear through the floor plate.

Current - GUIDE SHOE ASSEMBLY And Floor Guide Rail



- 1 - Ram Guide Shoe Assembly - 25% more surface area stitch welded to ram face.
- 2 - Three 1/4" Ar 500 (abrasive Resistant) plates left, right and top of floor guide rail. Welded in.
- 3 - Three 1/4" Ar 500 (abrasive Resistant) plates left, right and top of guide shoe. Welded in.
- 4 - Welded reinforcement bar welded to the outside of the guide shoe as scrapper and shock absorber.

So how do we stack up against to the competitions? Well let's compare.



Seems the real question is...
HOW DO THEY STACK UP TO US?